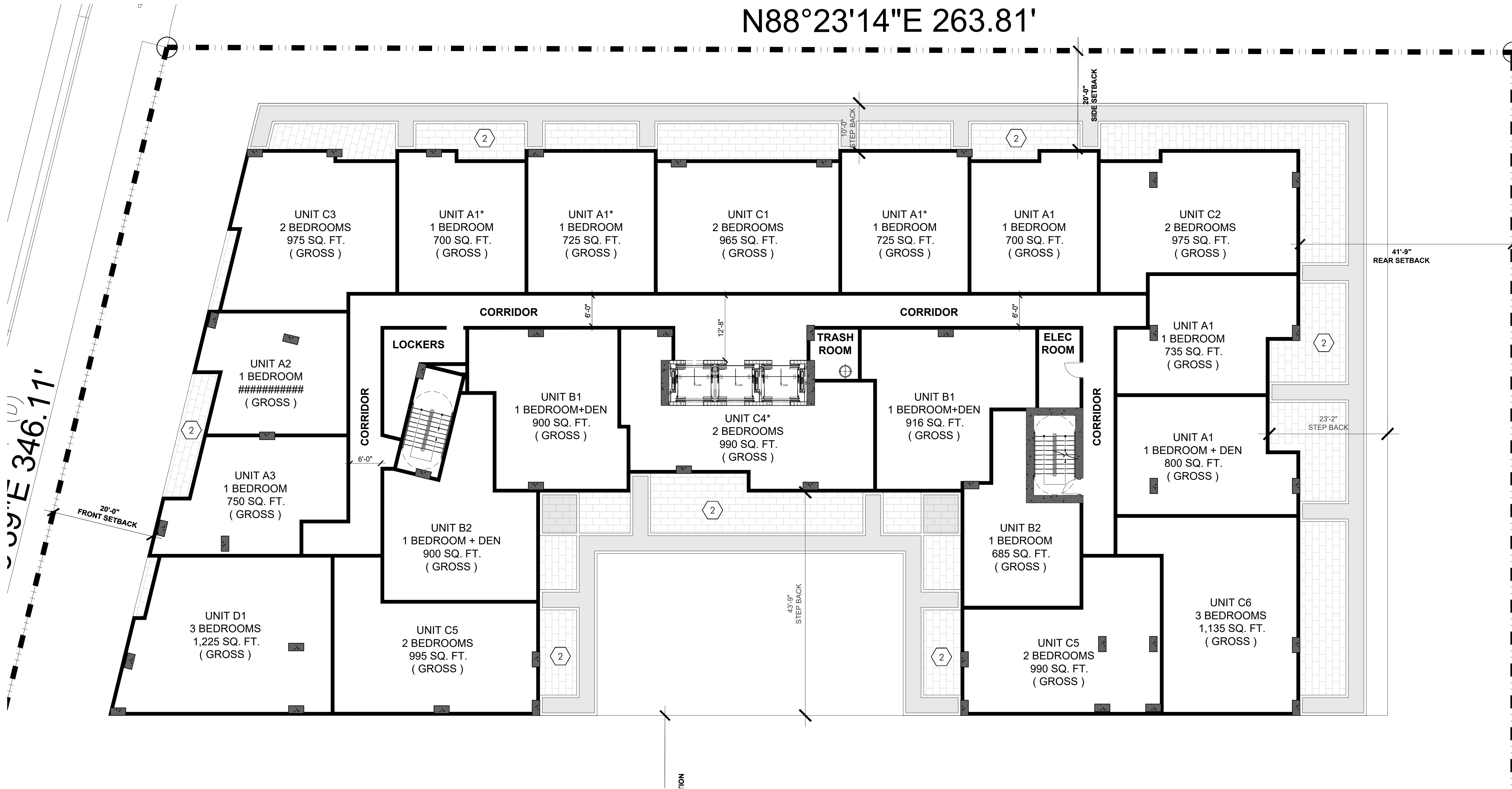


N88°23'14"E 263.81'



DRC

PZ24- 12000027
03/04/2026

idea

Architect

absolute-idea.com
CANAL PARK
3323 NE 163rd Street, Suite 200 North Miami Beach, FL 33160
📞 305.792.0015 📞 305.931.0279 📧 info@absolute-idea.com

SEAL

KEN GARDNER
FLA 1569

TO THE BEST OF MY KNOWLEDGE, THE PLANS AND SPECIFICATIONS COMPLY WITH THE APPLICABLE MINIMUM BUILDING CODES AND THE APPLICABLE PROFESSIONAL STANDARDS AND REQUIREMENTS OF THE FLORIDA BOARD OF PROFESSIONAL ENGINEERS AND ARCHITECTS.

Professionals

idea

Architect

30 YEARS

FLYNN

ENGINEERING

GS

DESIGN

REV.	DATE	DESCRIPTION
01	XX-XX-2024	D.R.C SUBMITAL

ALL MEASUREMENTS MUST BE VERIFIED BEFORE BEGINNING THE WORKS. NO MEASUREMENTS ARE TO BE SCALED DIRECTLY FROM THIS DRAWING.

Key section

Client
VERA FUND
NICK POLYUSHKIN
& YURI KHARITONENKOV
TEL: 305.833.3303

Project
**1600 S FEDERAL HIGHWAY
(MIXED-USE PROJECT)**
1600 SOUTH FEDERAL HIGHWAY,
POMPANO BEACH, FL 33062

Title

**HARDSCAPE PLAN
4TH - 6TH FLOOR**

Drawn
Verified
Approved

GSLA
KG
KG

Field
Scale
Date

LANDSCAPE ARCH
as shown
10-09-2024

Project Manager
Project

KG
24-838

Dwg. no.

L-105

HARDSCAPE SCHEDULE					
MATERIALS					
KEY	DESCRIPTION	MANUFACTURER	COLOR	FINISH	SIZE
1	Concrete	Contractor	Grey	Standard	See civil
2	Concrete Paver	TBD	TBD	TBD	TBD

N

HARDSCAPE PLAN - 4TH-6TH FLOOR

1
L105

40'

20'

10'

0

SCALE: 1" = 10'